

F.R.W.A. REG. NO.	STATE	PROJECT NUMBER	SHEET NO.	TOTAL SHEETS
1	MAINE	#2046	1	1

NOTE

INSTALL AN ANGLE STIFFENER AT CENTERLINE OF BEARING POINTS AND CENTERLINE OF JACKING ASSEMBLY. ANGLE TO BE 3" X 3" X 3/8" OR GREATER. SEE DETAIL THIS SHEET.

BRACE BOTH ENDS OF BEAM WITH ANGLES PLACED 45 DEGREES TO DECK.

SPLICE BEAM TO BE 16'-0" LONG AND SHALL BE SIMILAR TO THE JACKING BEAM BUT NEED NOT BE EXACTLY THE SAME CUT FROM A SHORT PIECE IF POSSIBLE.

PLACE BEAMS ON STEEL SHIMS (+/- 3" THICK). CARE SHALL BE TAKEN TO KEEP BEAMS PLUMB.

BEAM SPLICE SEE DETAIL.

PLATE 6" X 1" X 2'-0"

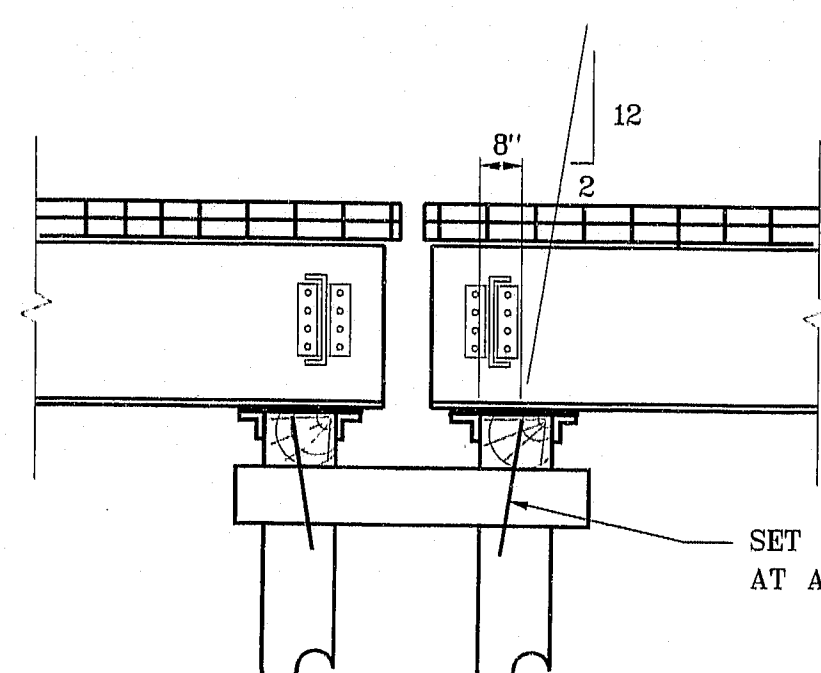
1 1/4" DIAMETER ROD
DOUBLE NUTS
PLATE 2'-8" X 2 X 1'-6"
STEEL SHIMS
HYDRAULIC JACK
ANGLE STIFFENER

4- W36 X 160 BEAMS FROM STOCK APPROX. 86'-0" LONG.

RESET BEAM (JACK) ASSEMBLY AND REPLACE PIER CAPS AND ABUTMENT CAPS SIMILARLY.

2-24" BEAMS WITH 9" FLANGES FROM STOCK (1 EACH SIDE OF CAP)

LONGITUDINAL ELEVATION



DRIFT PIN DETAIL

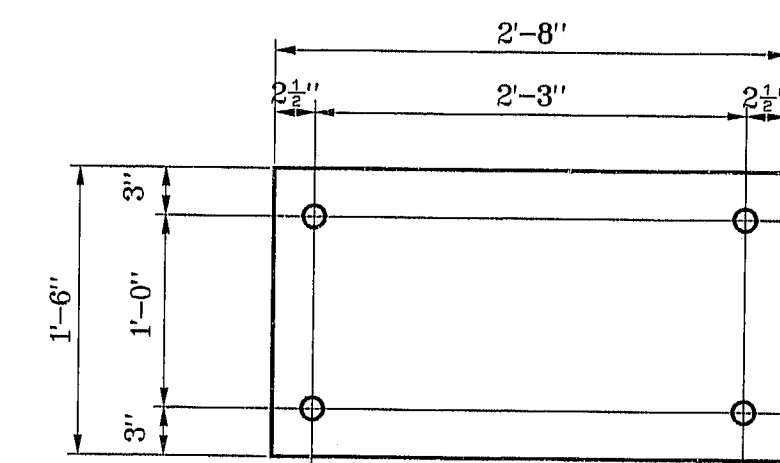
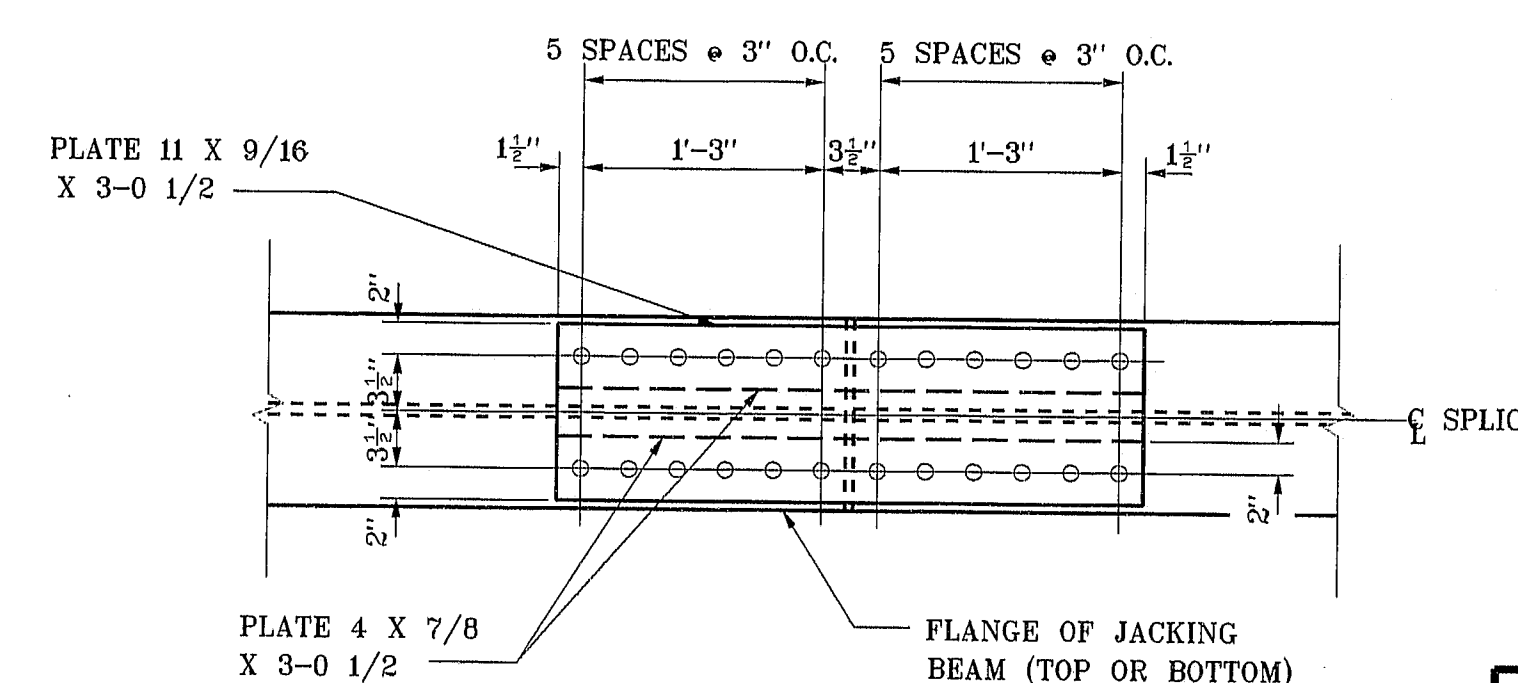
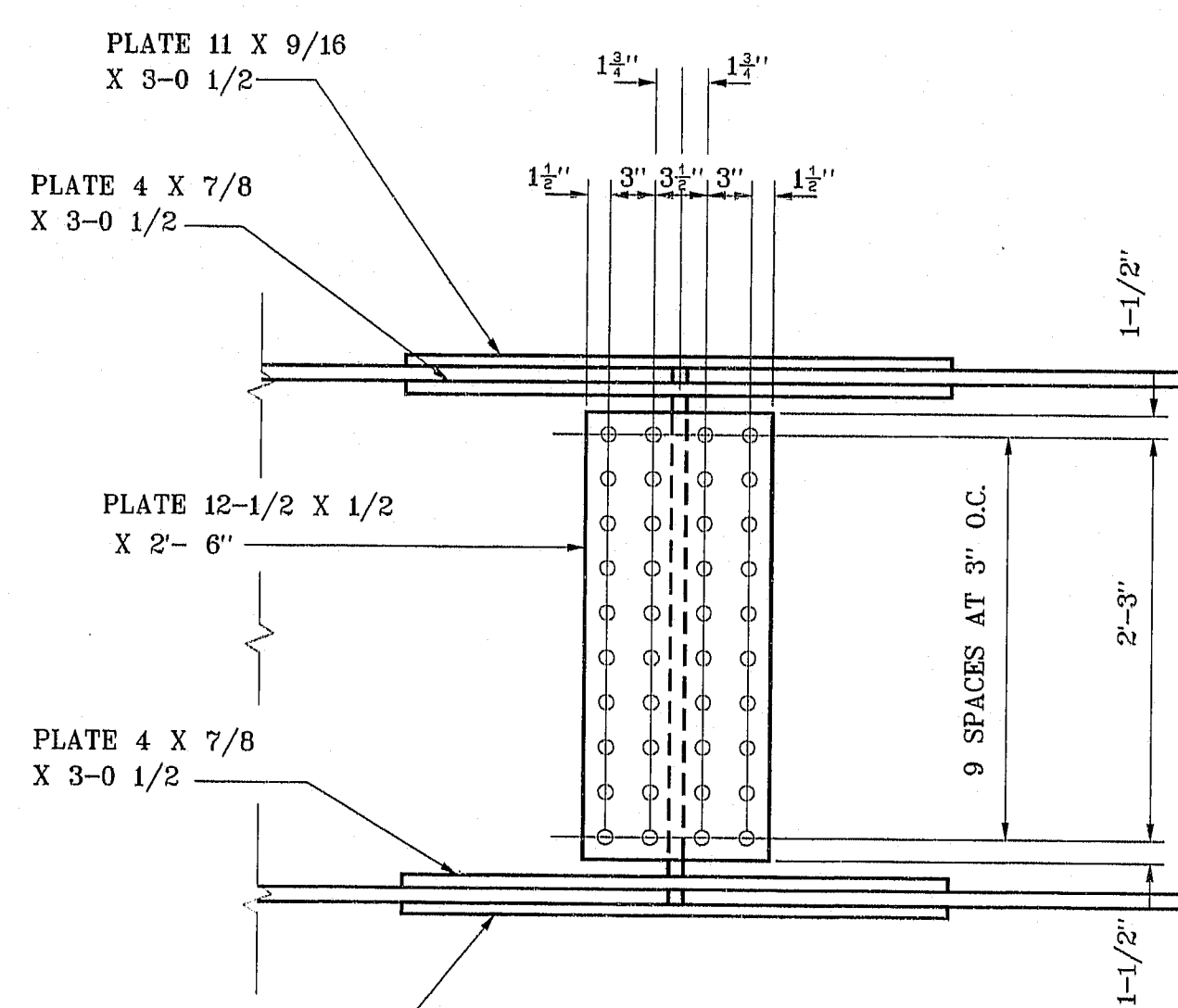


PLATE 2'-8" X 2 X 1'-6"

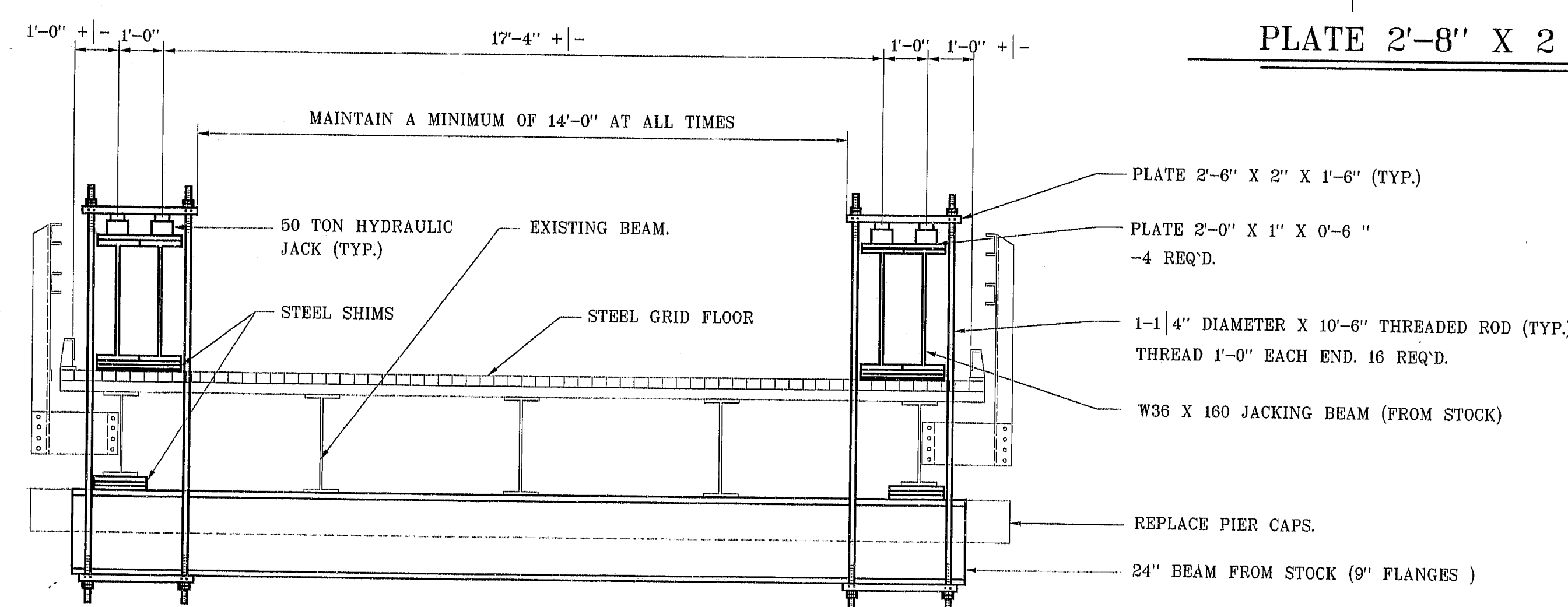


TOP OR BOTTOM VIEW

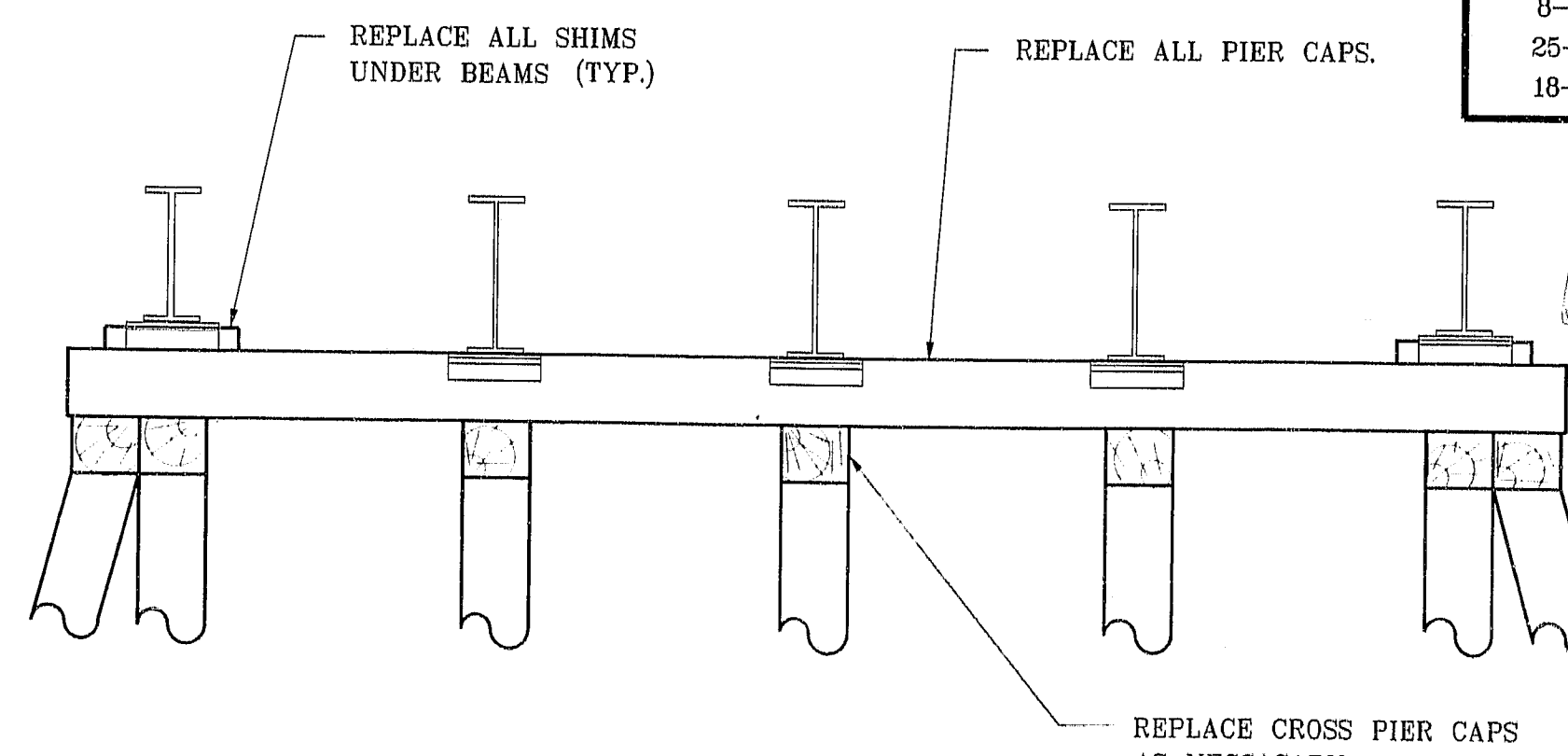


ELEVATION OF BEAM SPLICE

107-83



TRANSVERSE SECTION AT PIER CAP



TRANSVERSE SECTION

SPLICE PLATES REQ'D.	SHIM PLATES REQUIRED
8--PLATE 11 X 9/16 X 3-0 1/2	4--PL. 2-0 X 1 X 0-6
16--PLATE 4 X 7/8 X 3-0 1/2	48--PL. 2-0 X 1 X 0-6
8--PLATE 12-1/2 X 1/2 X 2-6	16--PL. 2-0 X 1/2 X 0-6
	16--PL. 2-0 X 1/4 X 0-6
	16--PL. 2-0 X 1/8 X 0-6
	12--PL. 0-10 X 1 X 1-3
	4--PL. 0-10 X 1/2 X 1-3
	8--PL. 0-10 X 1/4 X 1-3
	6--PL. 0-10 X 1/8 X 1-3
TIMBER SCHEDULE	HARDWARE SCHEDULE
8--10" X 12" X 22'-0" TIMBERS (PIER CAPS)	8--PL. 2-8 X 2 X 1-5 JACKING PLATE
25--10" X 12" X 5'-0" TIMBERS (CROSS CAPS)	8--1 1/4" DIAMETER THREADED RODS X 10'-6" PREVIOUS ORDER
16--4" X 12" X 2'-0" TIMBERS (SHIMS)	THREAD 1'-0" EACH END
	60--3/4" DIAMETER DRIFT PINS X 2'-0" LONG
	STATE OF MAINE
	DEPARTMENT OF TRANSPORTATION
	THOMPSONS BRIDGE
	OVER
	DECKER COVE
	IN
	SOUTHPORT
	LINCOLN COUNTY
	PIER CAP REPLACEMENT
	SHEET 1 OF 1 AUGUSTA, MAINE OCT. 1990

PROJECT DESIGN ENGINEER	DATE
BY L. BENNER	10/90
DESIGN DETAIL	
REVISIONS	
FIELD CHANGES	
PLANS	